

Connexoon Window RTS and Google Assistant

easy set up



Works with
IFTTT



Contents

Connect to IFTTT	3
Activate Google Assistant voice control Applet	6
Create a new Applet	8

Connect to IFTTT

IFTTT

Prior to IFTTT use...

- Ensure Google Assistant has been programmed and is operational.
- Ensure the Connexoon Window RTS device has scenes or ambiances programmed.

Note: Each Connexoon Window RTS user can have a maximum of 8 scenarios (4 modes and 4 ambiances)

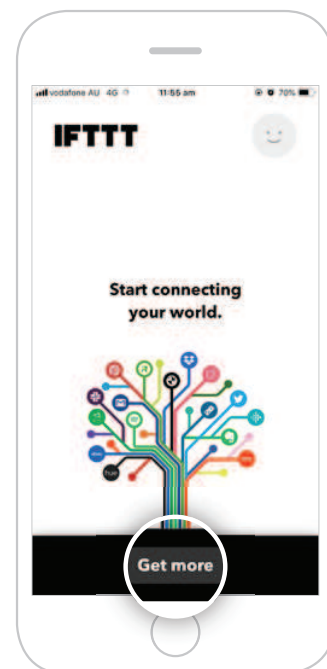
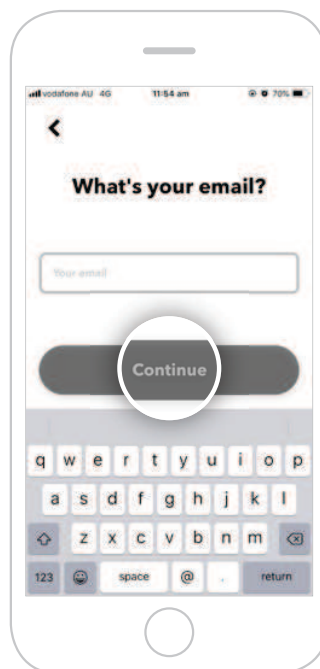
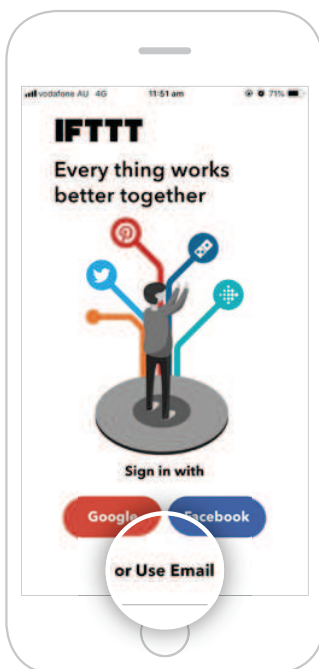


1 Download the IFTTT app or access the IFTTT website <https://ifttt.com>

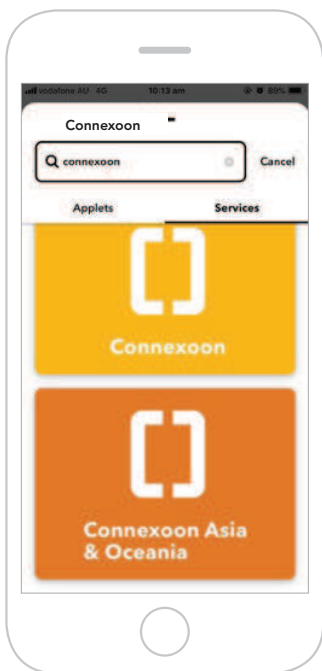
2 Open the IFTTT app and select **Use Email** to sign in.

3 Enter your email address and select **Continue**.

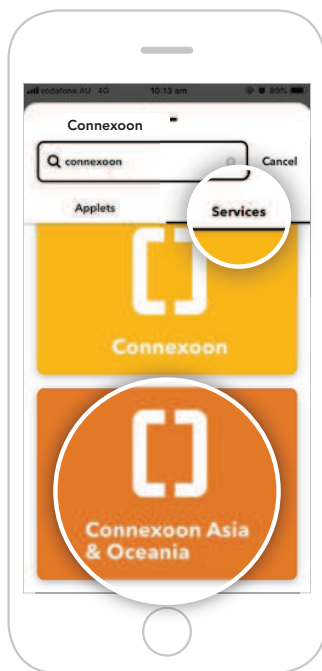
4 Select **Get more** at the bottom of the screen to add your Connexoon Window RTS to the IFTTT account.



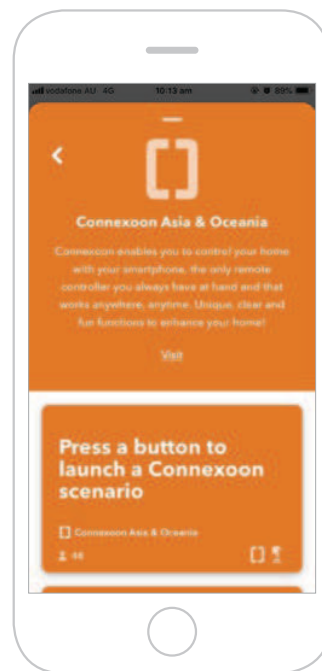
5 Type **“Connexoon”** in the search bar and click **Search**.



6 Ensure the **Services** tab has been selected in the search results. Select **Connexoon Asia & Oceania**.



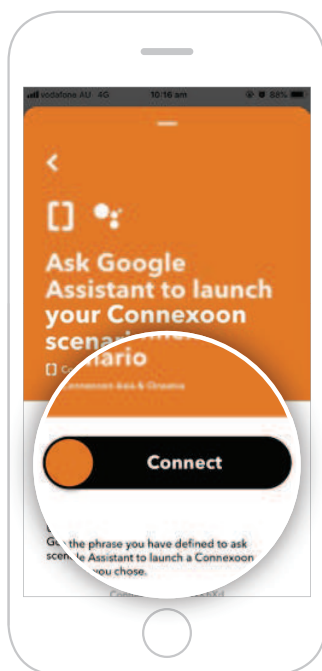
7 You will find applets proposed by **Connexoon Asia & Oceania**.



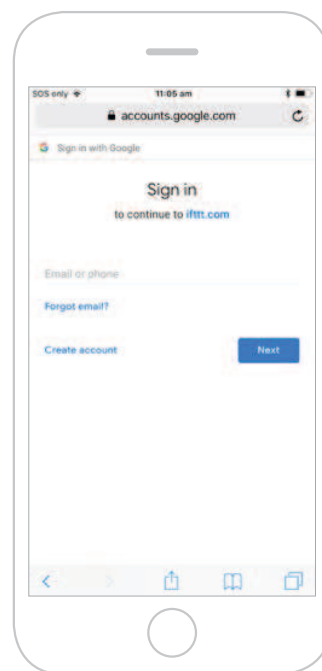
8 Select the applet for **Google Assistant** to connect.



9 Swipe right on the **Connect** button.



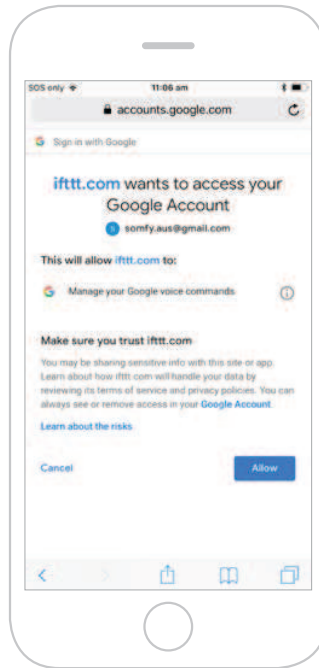
10 Sign in with your **Google** login details.



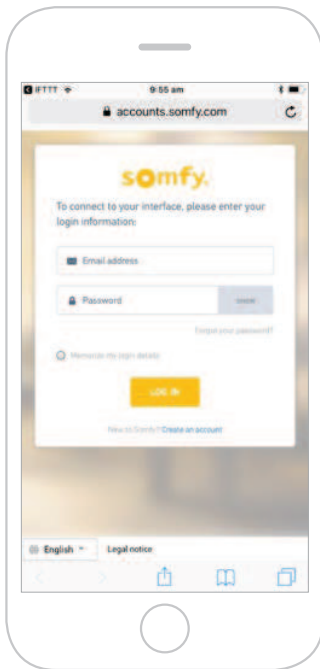
11 Allow IFTTT to access your Google Account.

“Open in IFTTT?” pop-up appears.
Select **Open** to proceed.

To return to main screen,
click the back arrow in the
top-left corner and clear
the Search field.



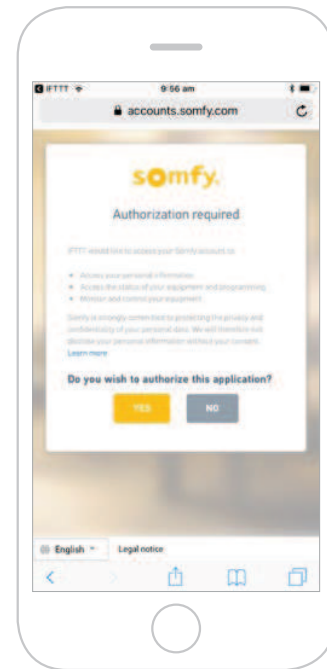
12 Enter the email address
and password used for your
Connexoon Window RTS login.



13 Authorise IFTTT compatibility with your Connexoon Window RTS.

“Open in IFTTT?” pop-up appears. Select **Open** to proceed.

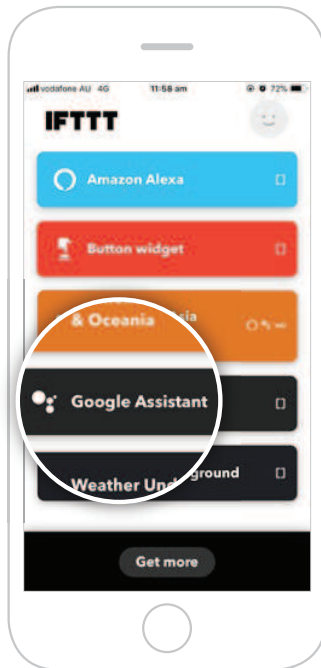
To return to main screen,
click the back arrow in the
top-left corner and clear
the Search field.



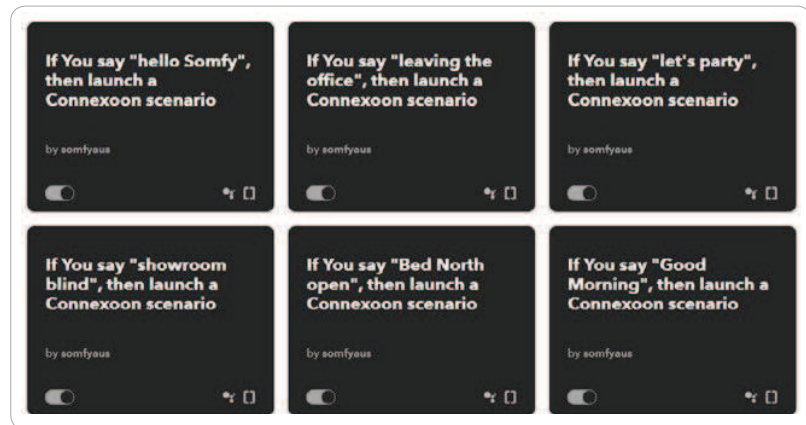
Activate Google Assistant voice control Applet

- Follow the next steps to **activate existing Applets** created by Connexoon Asia & Oceania.
- To **create a new Applet**, move to step 18.

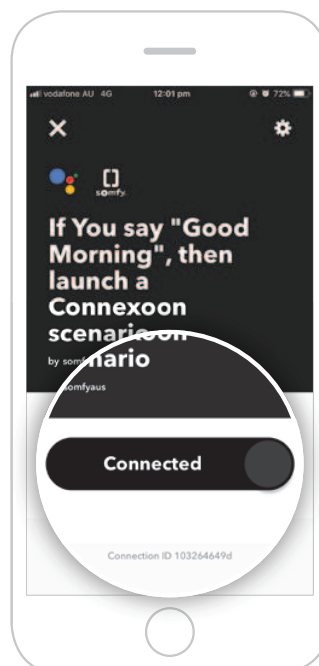
14 Under your home page, select **Google Assistant**. This will display all available Applets you've created.



15 Scroll through the list of pre-defined **Applets** to select the one you wish to **activate**.



16 Select the Applet chosen to see the services used. Then swipe right on **Connect**.

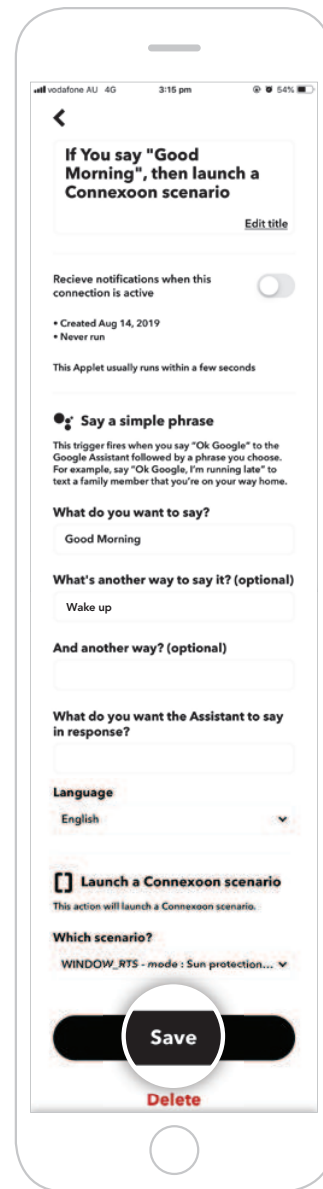


- 17 Enter the details in the Applet and select **Save**.
Your customised Applet has been created.

Choose the **phrase** which will launch the scene or ambiance.

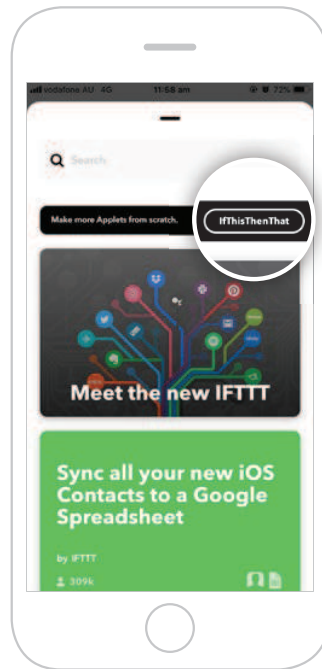
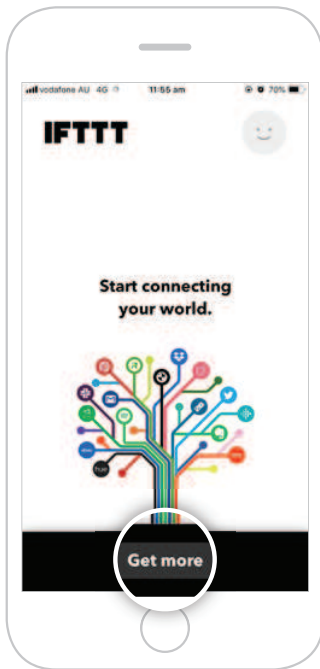
Optional phrases which will also launch the scene or ambiance.

Select the **Connexoon Window RTS scene** or **ambiance** to be launched.



Create a new Applet

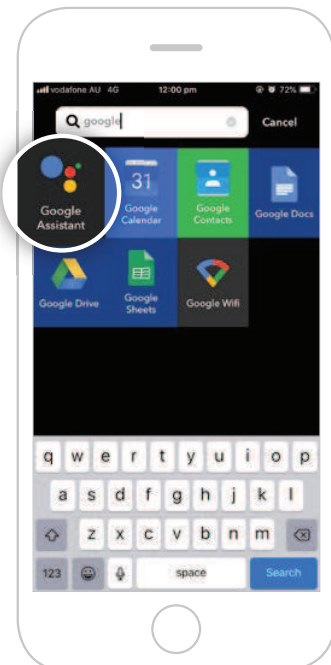
18 On your home page, press **Get more**. Then select **IfThisThenThat**, situated underneath the search bar.



19 Select **+ This**.



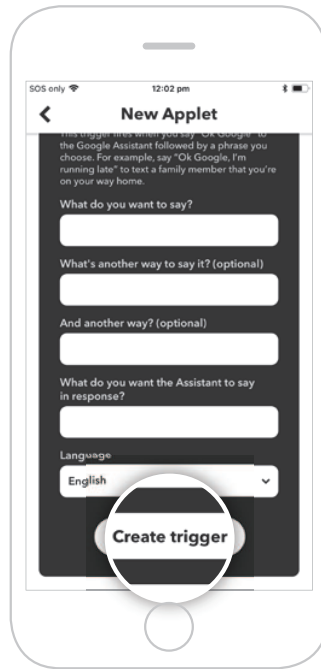
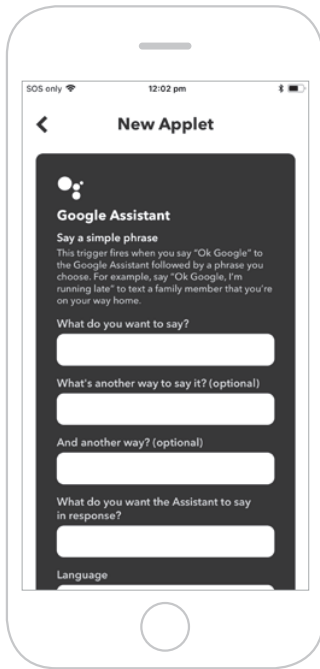
20 Search and select **Google Assistant**.



21 Select the **type of trigger** to activate the Connexoon Window RTS.



- 22 Enter the phrase to trigger your Connexoon Window RTS.
Select **Create trigger**.



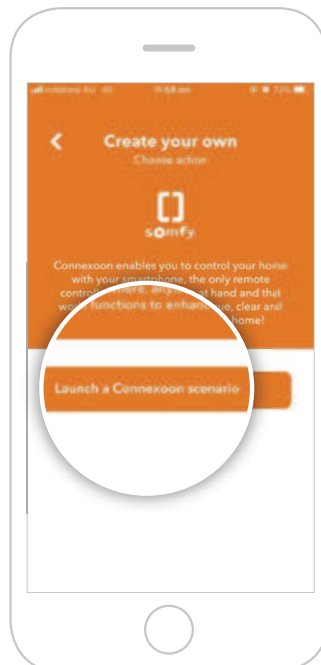
- 23 Select **+ That**.



- 24 Search for "**Connexoon**".
Ensure you select
**Connexoon Asia
& Oceania**.



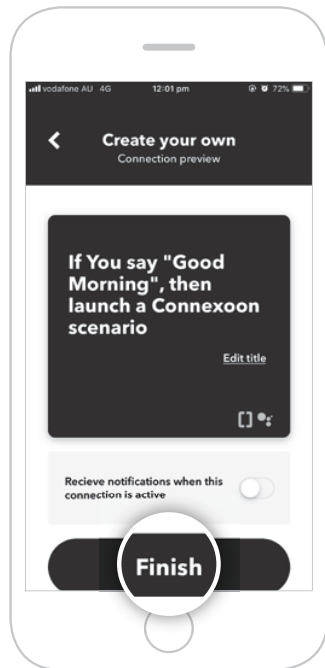
- 25 Select **Launch a
Connexoon scenario**.



- 26 Select the Scenario you
wish to launch from the
drop-down menu. Select
Create action.



27 The Applet has been created, select **Finish** to save.



28 The Applet can be viewed when selecting **Google Assistant** on your home page.

